



Horticulture

MASTER GreenPower 600W 347V Mogul 1SL/12

Plant growth (photosynthesis) is not determined by lux or energy, but by the photons from the blue to red (400–700 nm) part of the spectrum. This is called growth light! For horticulture, natural daylight (global radiation) is in most cases measured in terms of energy (J or W) with a solar meter. This meter is generally positioned on top of the greenhouse. The value of global radiation is important for climate and humidity control in the greenhouse. Agrolite XT lamps are specially developed for maximum growth light and are among the most efficient light sources available for horticulture.

Product data

General Information	
Base	E39 [Single Contact Mogul Screw]
Operating Position	Universal [Universal]
Life to 5% Failures (Nom)	12000 h
Life To 10% Failures (Nom)	14000 h
Life to 20% Failures (Nom)	16000 h
Life to 50% Failures (Nom)	20000 h
System Description	System 400V
Light Technical	
Color Code	220 [CCT of 2000K]
Luminous Flux (Rated) (Nom)	86400 lm
Photosynthetic Photon Flux (PPF)	1120 µmol/s
PPF Maintenance 2000 h	98 %
PPF Maintenance 4000 h	97 %
PPF Maintenance 8000 h	94 %
PPF Maintenance 10000 h	92 %
PPF Maintenance 12000 h	91 %
Design Mean Lumens	80500 lm

Chromaticity Coordinate X (Nom)	526
Chromaticity Coordinate Y (Nom)	420
Correlated Color Temperature (Nom)	2000 K
Luminous Efficacy (rated) (Nom)	144 lm/W
Color Rendering Index (Max)	-
Color Rendering Index (Nom)	33
Operating and Electrical	
Lamp supply voltage	347 V [347]
Power (Rated) (Min)	608.0 W
Power (Rated) (Nom)	608.0 W
Lamp Current (EM) (Nom)	3.67 A
Ignition Supply Voltage (Max)	398 V
Ignition Peak Voltage (Max)	3500 V
Re-Ignition Time (Min) (Max)	1 min
Ignition Time (Max)	10 s
Voltage (Max)	200 V
Voltage (Min)	170 V

Horticulture

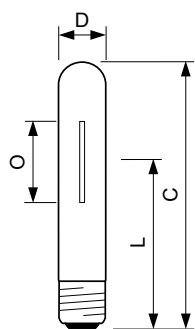
Voltage (Nom)	185 V
Controls and Dimming	
Dimmable	Yes
Run-Up Time 90% (Max)	5 min
Mechanical and Housing	
Bulb Finish	Clear (CL)
Cap-Base Information	41
Approval and Application	
Energy Efficiency Label (EEL)	A++
Mercury (Hg) Content (Nom)	42.0 mg
Energy Consumption kWh/1000 h	669 kWh

Luminaire Design Requirements	
Bulb Temperature (Max)	450 °C
Cap-Base Temperature (Max)	250 °C
Product Data	
Order product name	MASTER GreenPower 600W 347V Mogul 1SL/12
EAN/UPC - Product	046677404895
Order code	404897
Numerator - Quantity Per Pack	1
Numerator - Packs per outer box	12
Material Nr. (12NC)	928198109207
Net Weight (Piece)	0.179 kg
ILCOS Code	ST-600-H/S-E39

Warnings and Safety

- Lamp contains mercury. Manage in Accord with Disposal Laws. See: www.lamprecycle.org or 1-800-555-0050

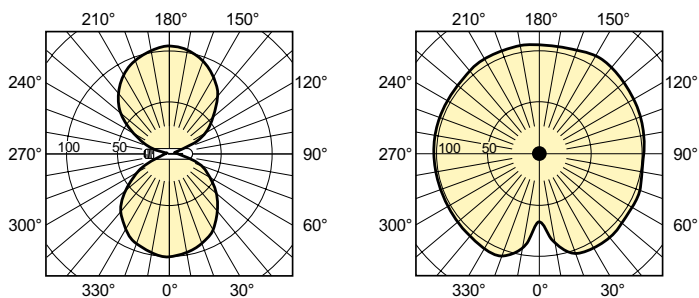
Dimensional drawing



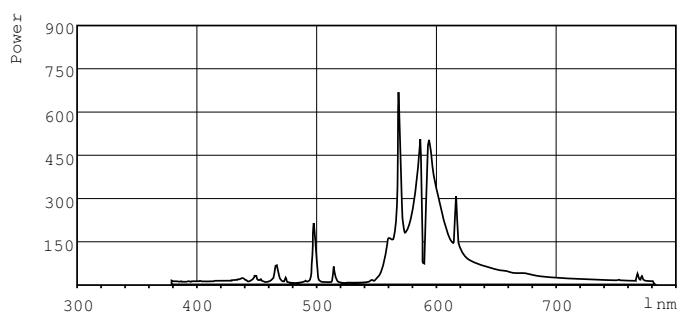
SON GreenPower 600W 347V Mogul

Product	D (max)	D	O	L	C (max)	A
MASTER GreenPower 600W 347V Mogul 1SL/12	47 mm	1.81 in	102 mm	164 mm	275 mm	205 mm

Photometric data

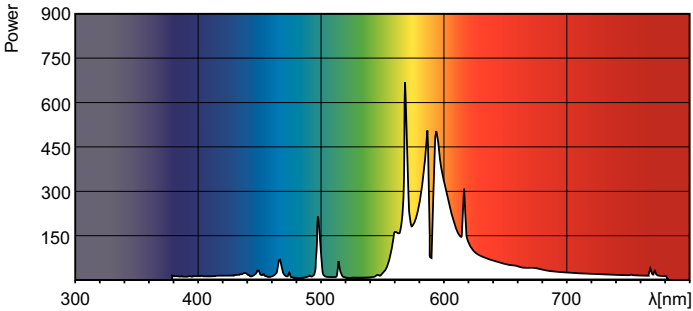


MASTER GreenPower & Agro 250W - 600W



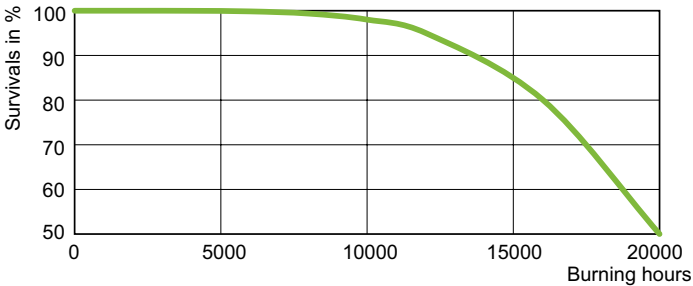
SON GreenPower 600W

Photometric data

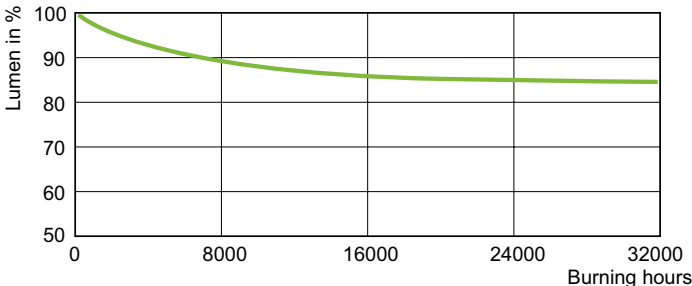


SON GreenPower 600W

Lifetime



GreenPower 600 W Life Expectancy 347 V, 400 V



MASTER GreenPower 600 W Lumen Maintenance

